

JEWELLERY DESIGN PORTFOLIO

- RUNU UDAWANT



INTRODUCTION



A jewellery can change how you look ,
Your look can change your body ,
Your body can change your mind ,
Your mind can change your behavior ,
Your behavior can change your outcome !
- unknown

PERSONAL

- Runu Ramesh Udawant
- 11-10-96
- udawantrunu111096@gmail.com

EDUCATIONAL

- Hsc from RYK college of science, nasik.
- B.Des in product design from CANS, nasik
- M.Des in jewellery design from INSD, Pune

WORK EXPERIENCE

- 3 months of experience as a product designer at Isomorphic design lab, Pune.

INTEREST AREAS

- Painting
- Singing
- Cooking
- Manual designing

OBJECTIVE

- To observe and learn things from nature and environment with an aim of implement them into design as well as to get involved in a program where my ideas, thoughts and enthusiasm will get an opportunity.



WHAT ARE MOTIFS ?

A motif is the most basic element from which a design is formed. It is generally developed from different combination of shapes. Motifs are repeated in different ways to create a pattern whereas patterns are repeated to create designs. Most of the traditional motifs are often inspired from nature. Motifs are used in Indian designs.



MOTIF BASED
NECKLACE,
HAND KADA AND
EARRINGS





WHAT ARE DIAMONDS ?

Diamond is the solid form of element carbon. Diamond has the highest hardness. The rarity, durability, cut, clarity, color, and carat of diamonds make them expensive. Diamonds represent strength, love and health. Diamonds have also been associated with good health and represent long life. Diamonds are lustrous, shiny and glossy.



NECKLACE



CHANDELIER EARRINGS



NECKLACE



BRACELET



PENDANTS



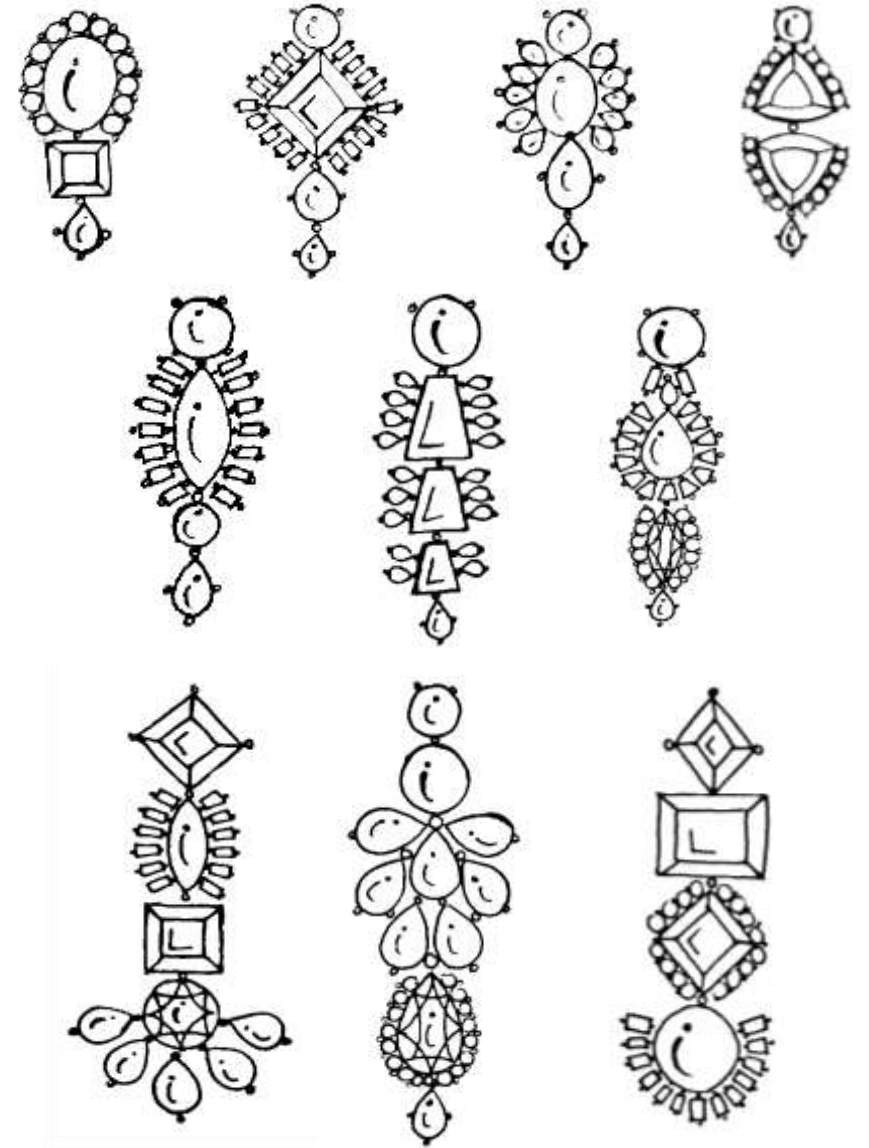


GEMSTONES

WHAT IS GEMSTONE ?

A gemstone (also called a fine gem, jewel, precious stone, or semi-precious stone) is a piece of mineral crystal which, in cut and polished form, is used to make jewelry or other adornments.

GEM BASED THEORY (EARRINGS)



A pearl necklace is draped across the frame against a deep purple, wavy background. The pearls are white and glossy, with several bright highlights. The word 'PEARLS' is written in white, uppercase letters to the left of the necklace.

PEARLS

A pearl is a hard, glistening object produced within the soft tissue of a living shelled mollusk or another animal. The ideal pearl is perfectly round and smooth. The finest quality of natural pearls have been highly valued as gemstones and objects of beauty for many centuries. Because of this, pearl has become a metaphor for something rare, fine, admirable and valuable.



earrings





BRIDAL PENDANTS



BRIDAL JEWELLERY

Bridal jewellery carries ethnic and spiritual meanings, especially during weddings. It plays an important role in Indian weddings. An Indian bride is incomplete without jewellery. The pieces of jewellery worn by the bride signifies purification and rituals and also that she is to become a part of her husband's extended family.

LAYERED NECKLACE DESIGNS

Designs with multiple layers or repeating the same or different layers of design to create rhythm and harmony in the piece and also to make it a visually heavy jewellery.



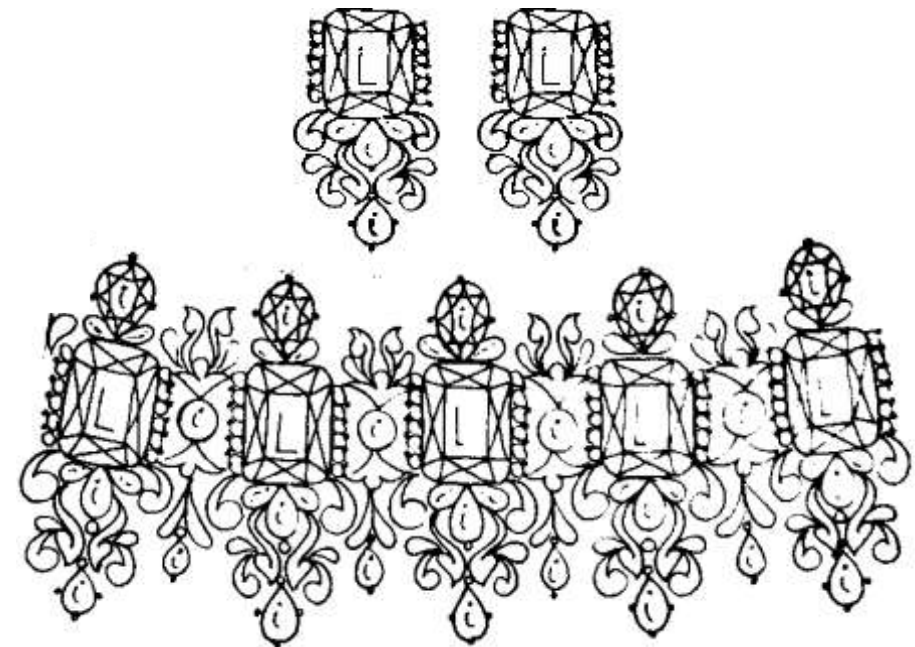
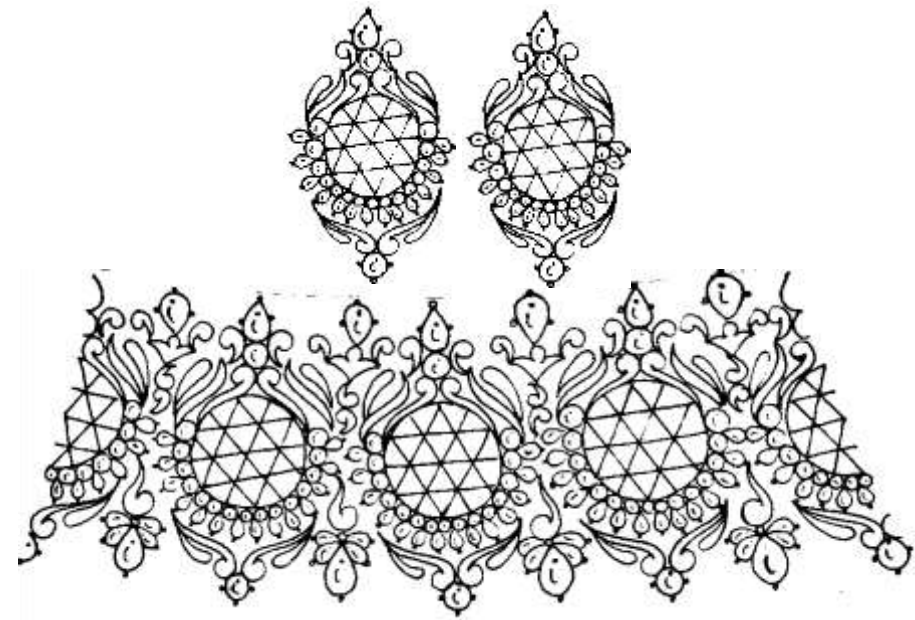




CHOKER

A choker is a close fitting necklace worn around the neck, typically 14 inch to 16 inch in length. Chokers can be made of a variety of materials, including velvet, plastic, beads, latex, leather, metal, such as silver, gold, or platinum, etc. They can be adorned in a variety of ways, including with studs, or a pendant.

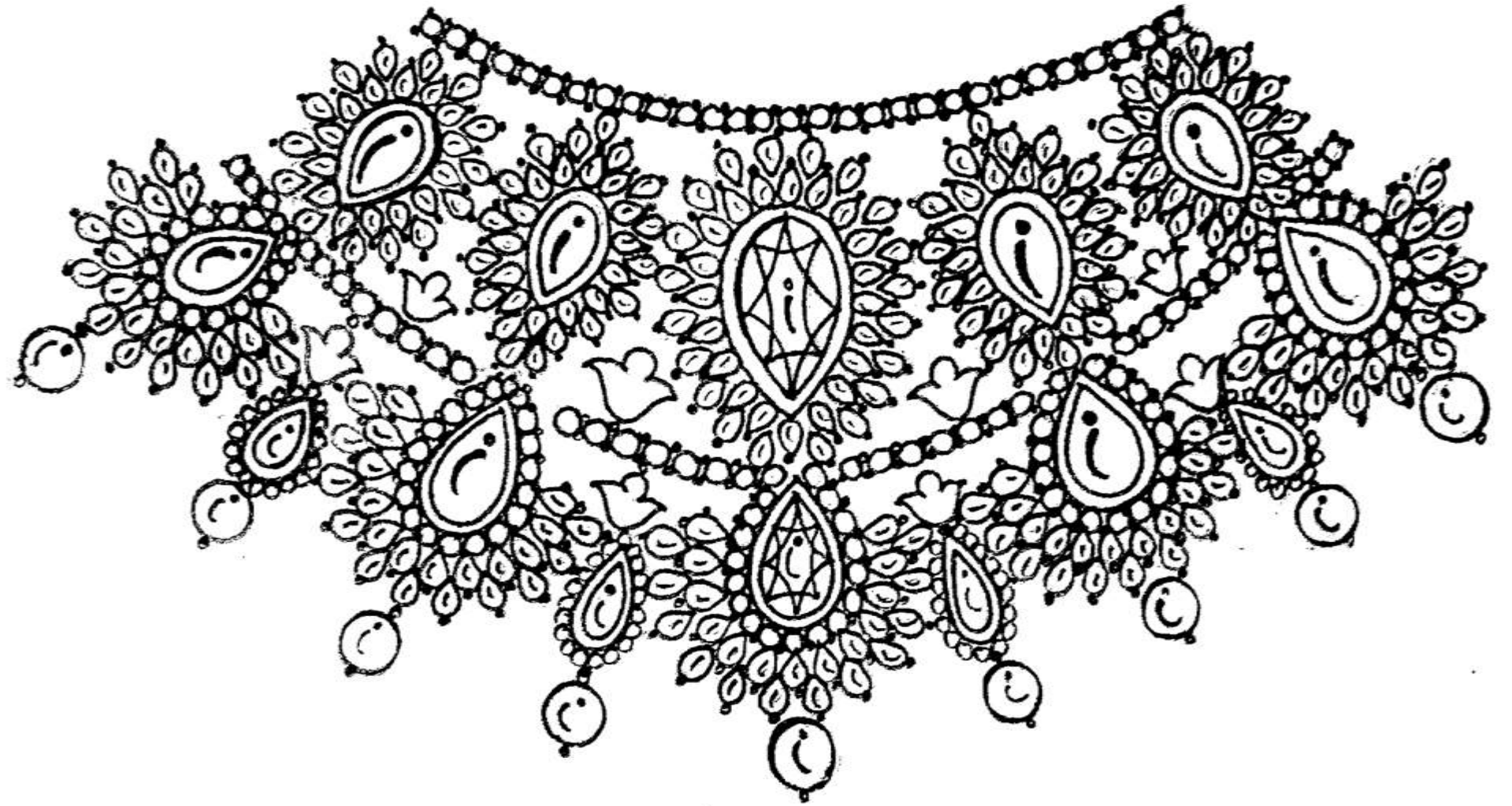
Reference image by outhouse jewellery brand

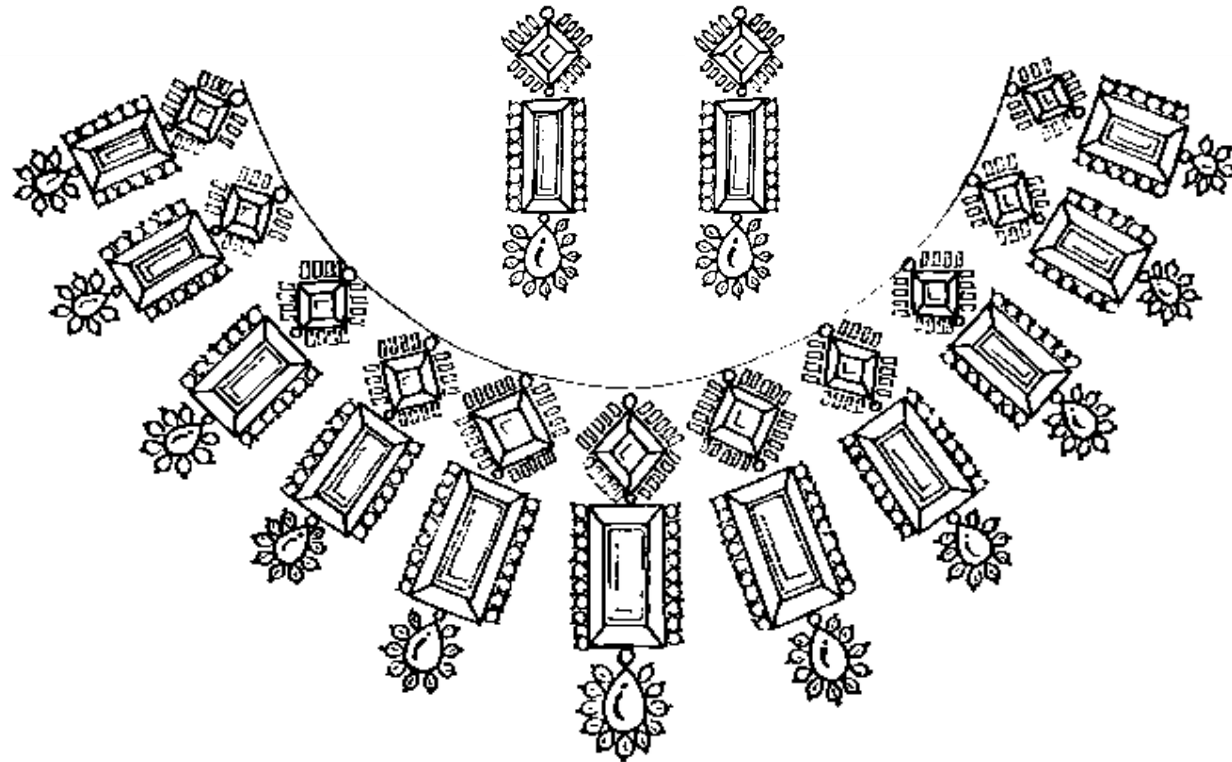
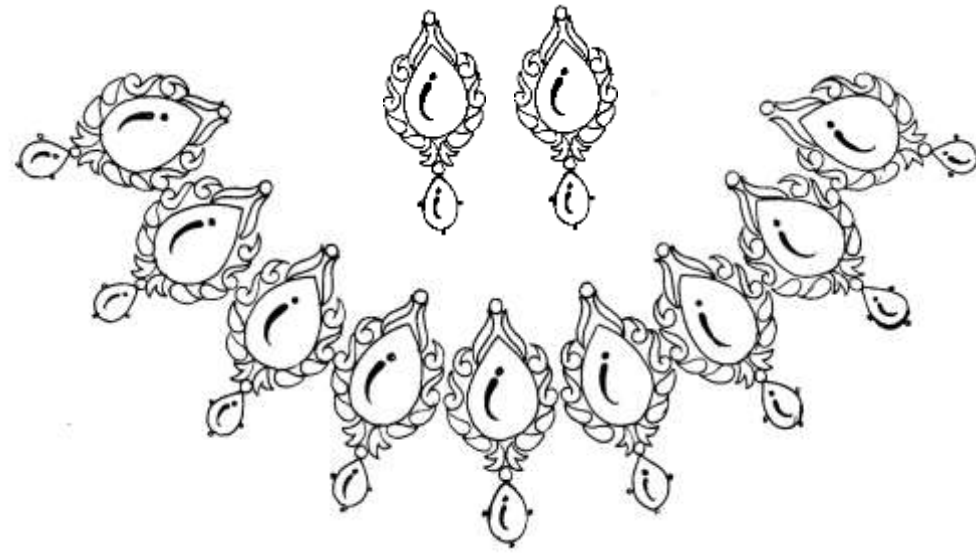
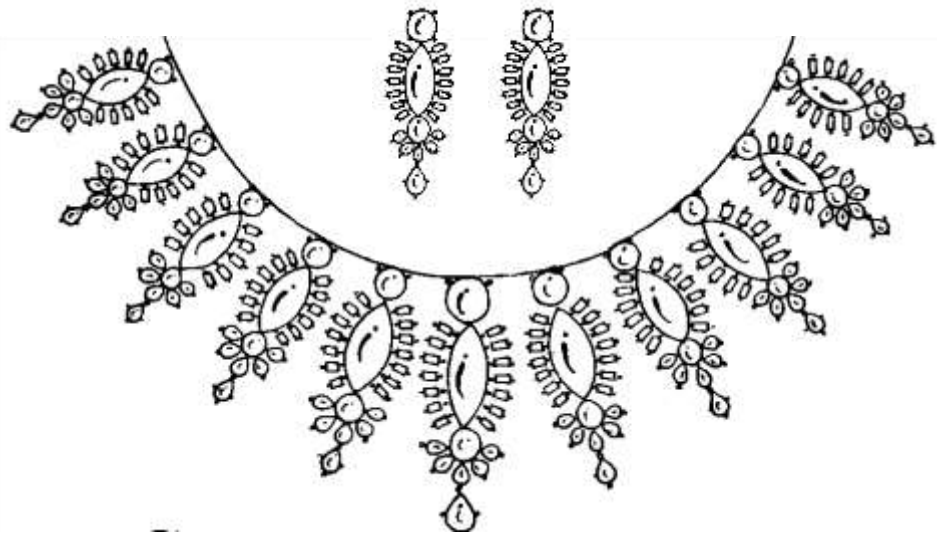


STONES
USED



Material Palette
Ruby
Emerald
Diamond
Pearls

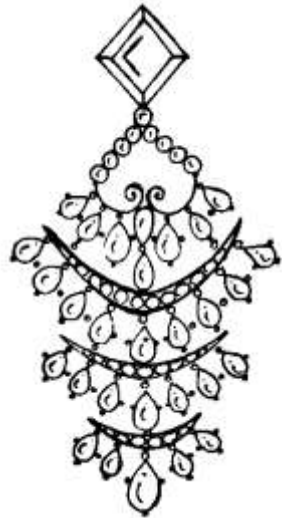
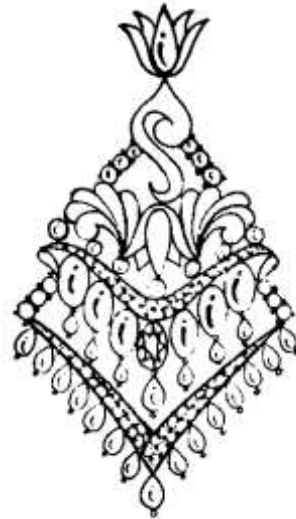
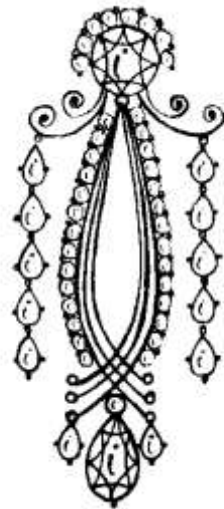
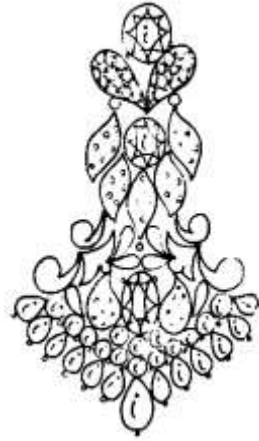
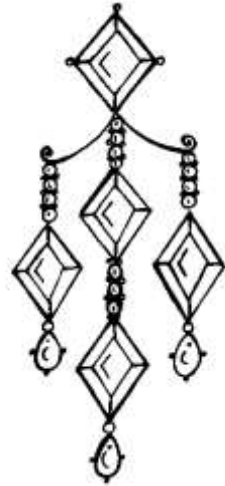
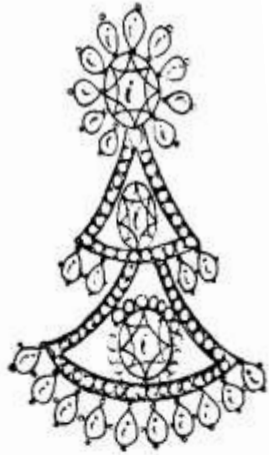




REPETITION BASED DESIGNS

WHAT IS
REPETITION ?
Repetition is simply
the act of repeating
the same element
many times in a
design. We use
repetition to create
a sense of unity and
consistency
throughout a
design. Repetition
creates a particular
style, creates
cohesiveness,
creates emphasis,
hierarchy structure
and strengthens a
design.

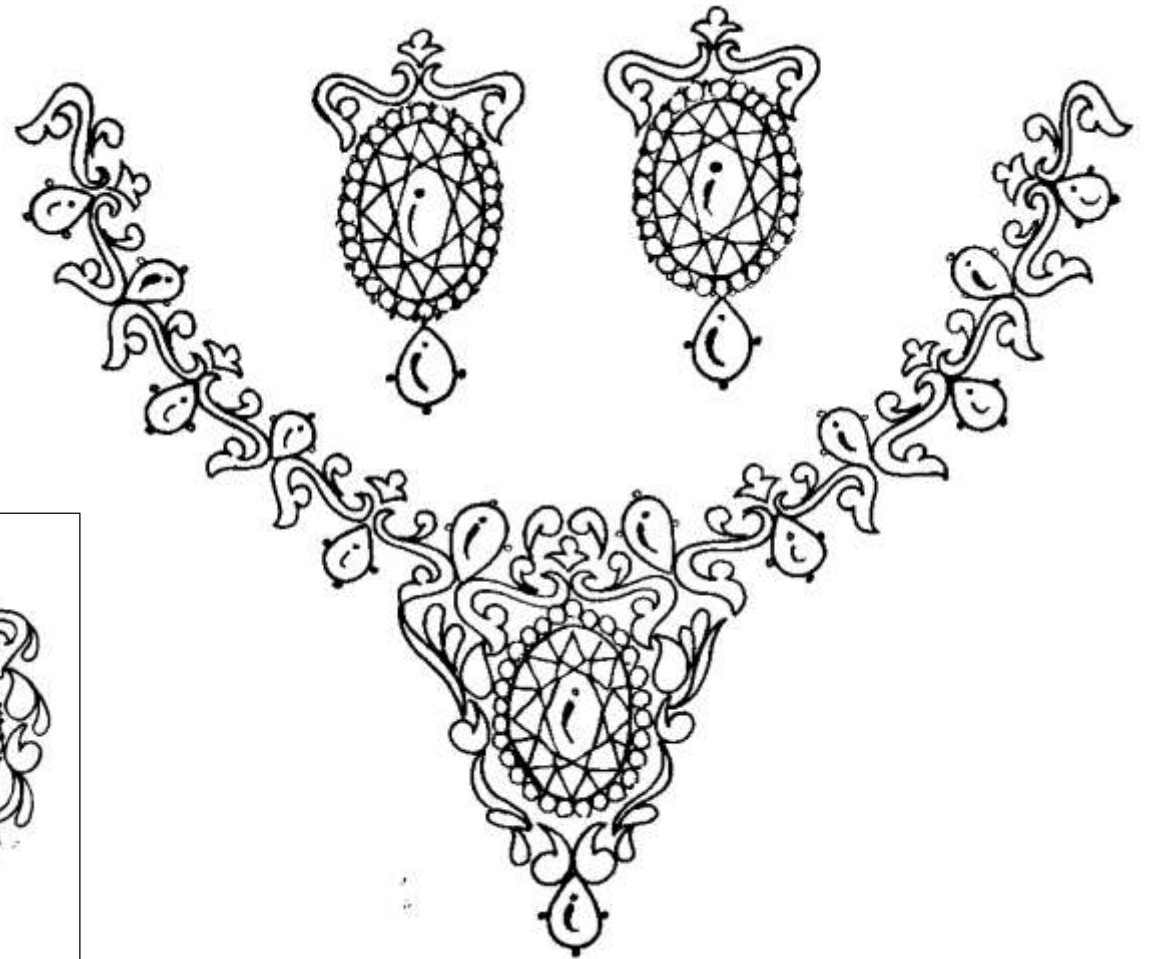
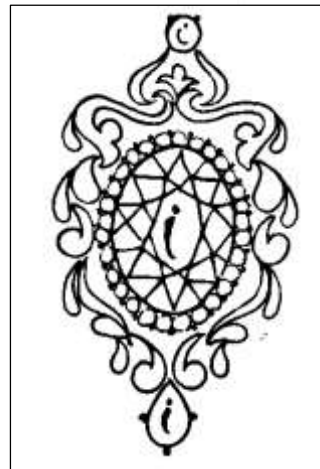
CHANDELIER EARRINGS



Chandelier earrings are a piece of jewellery worn in the ears which hang freely in a cascading shape and has a movement which adds liveliness to the design.

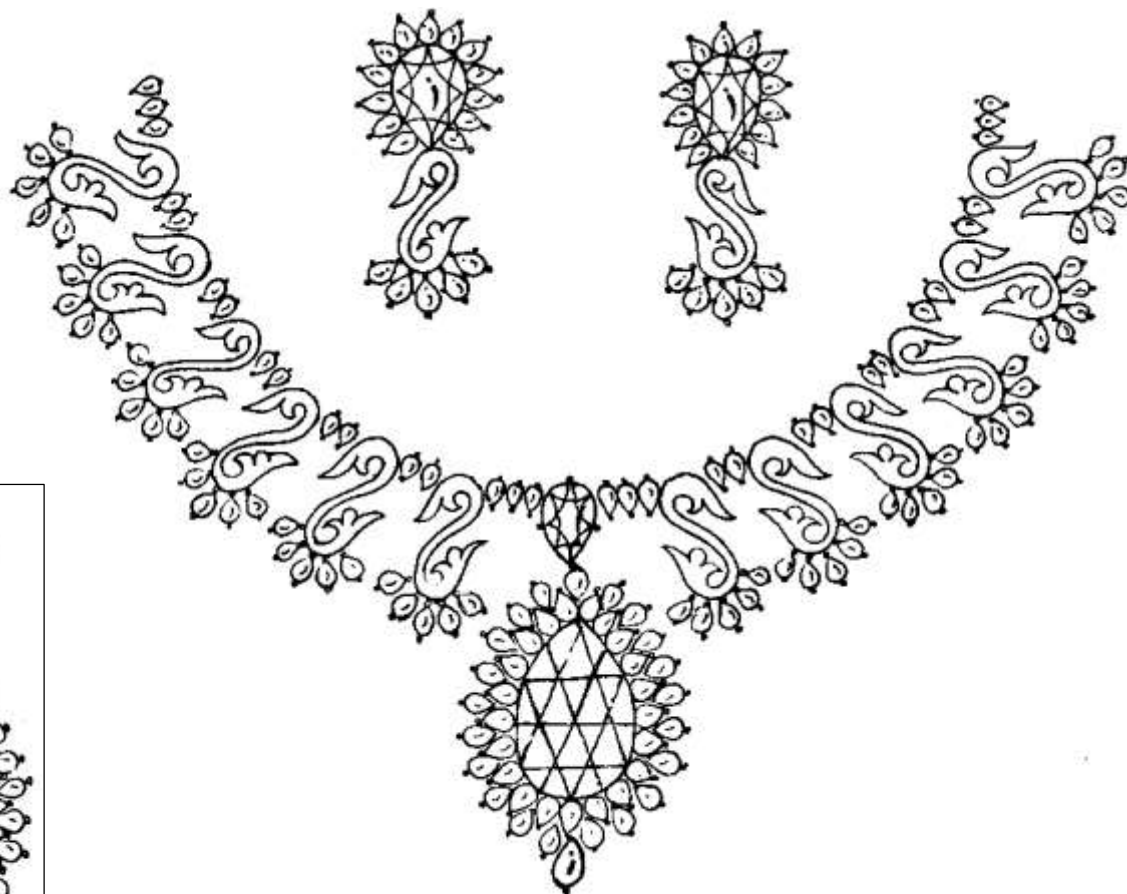
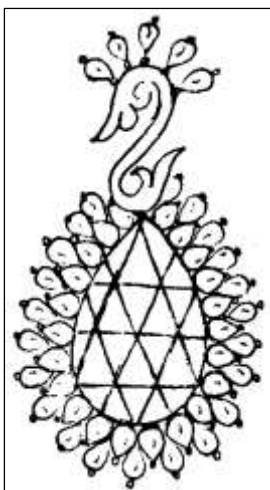
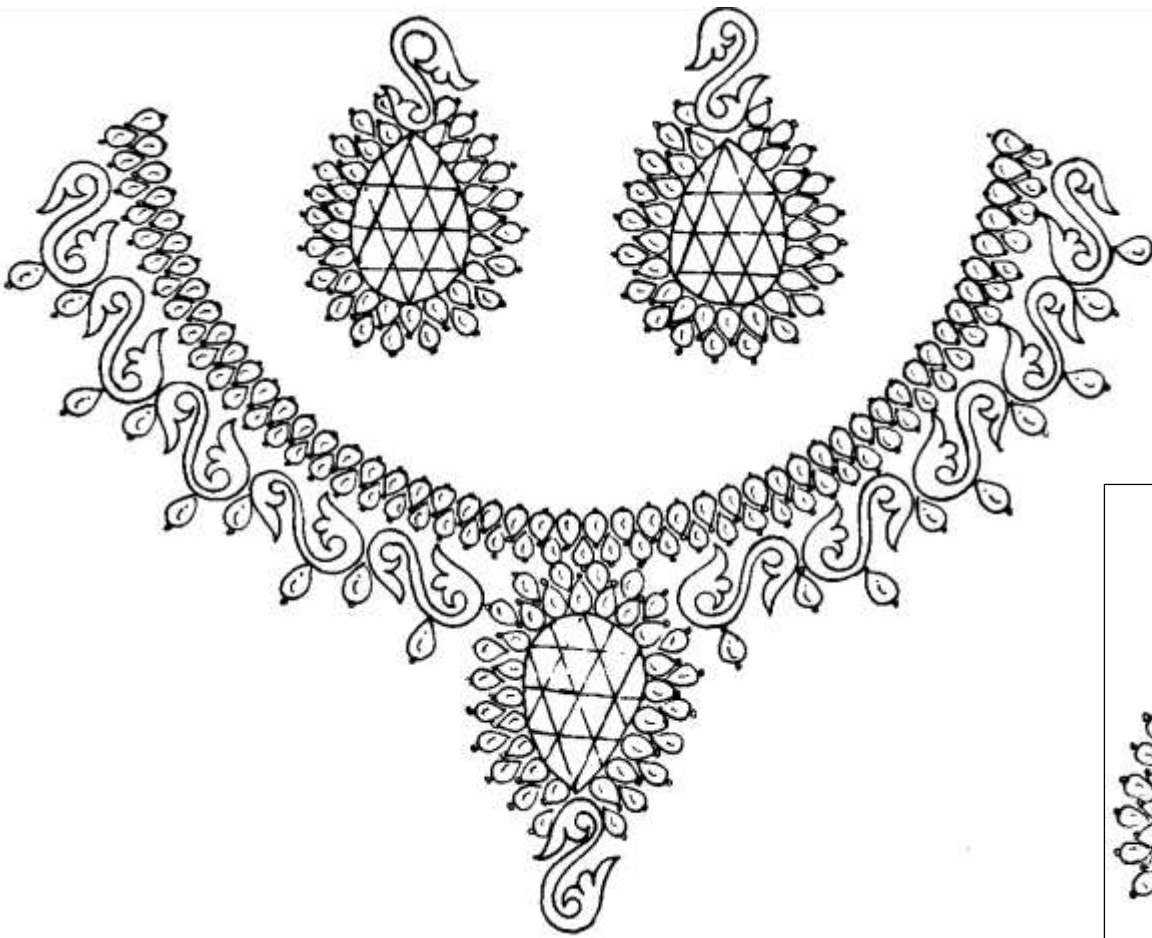
MULTI PURPOSE DESIGNS

GEMSTONES
MOTIFS
DIAMONDS



MULTIPURPOSE DESIGNS

GEMSTONES
MOTIFS
DIAMONDS





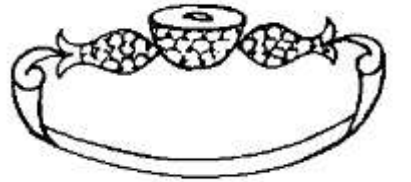
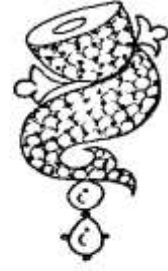
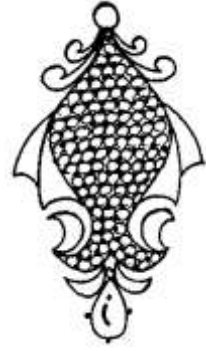
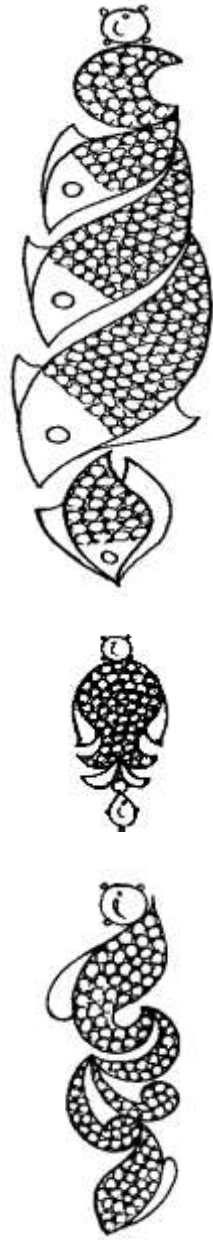
NATURAL
(Fish)

INSPIRATION DESIGN

MANMADE
(Tabla)



EARRINGS AND
BRACELLETS
INSPIRED
FROM
MANMADE
AND NATURAL
INSPIRATION





NECKLACES
INSPIRED
FROM
MANMADE
AND NATURAL
INSPIRATION

THE BIRD OF PARADISE

Peacock is the national bird of India. Peacocks are famous for their large tail feather. The peacocks are symbolic of re-growth and rejuvenation, royalty, respect, honor, and integrity. They are also a symbol of beauty, love, and passion. In Hinduism and Buddhism, these birds are considered to be sacred and worshipped alongside their deities.



KADA DESIGN





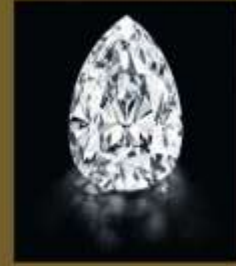
Elegance
Flow
Movement



The blazing contrasts



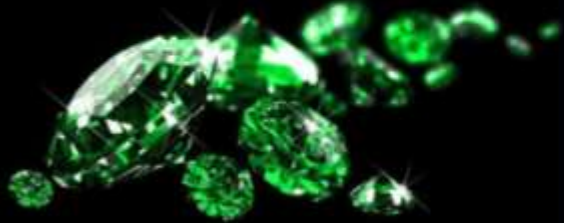
Contrast
Harmony
Balance

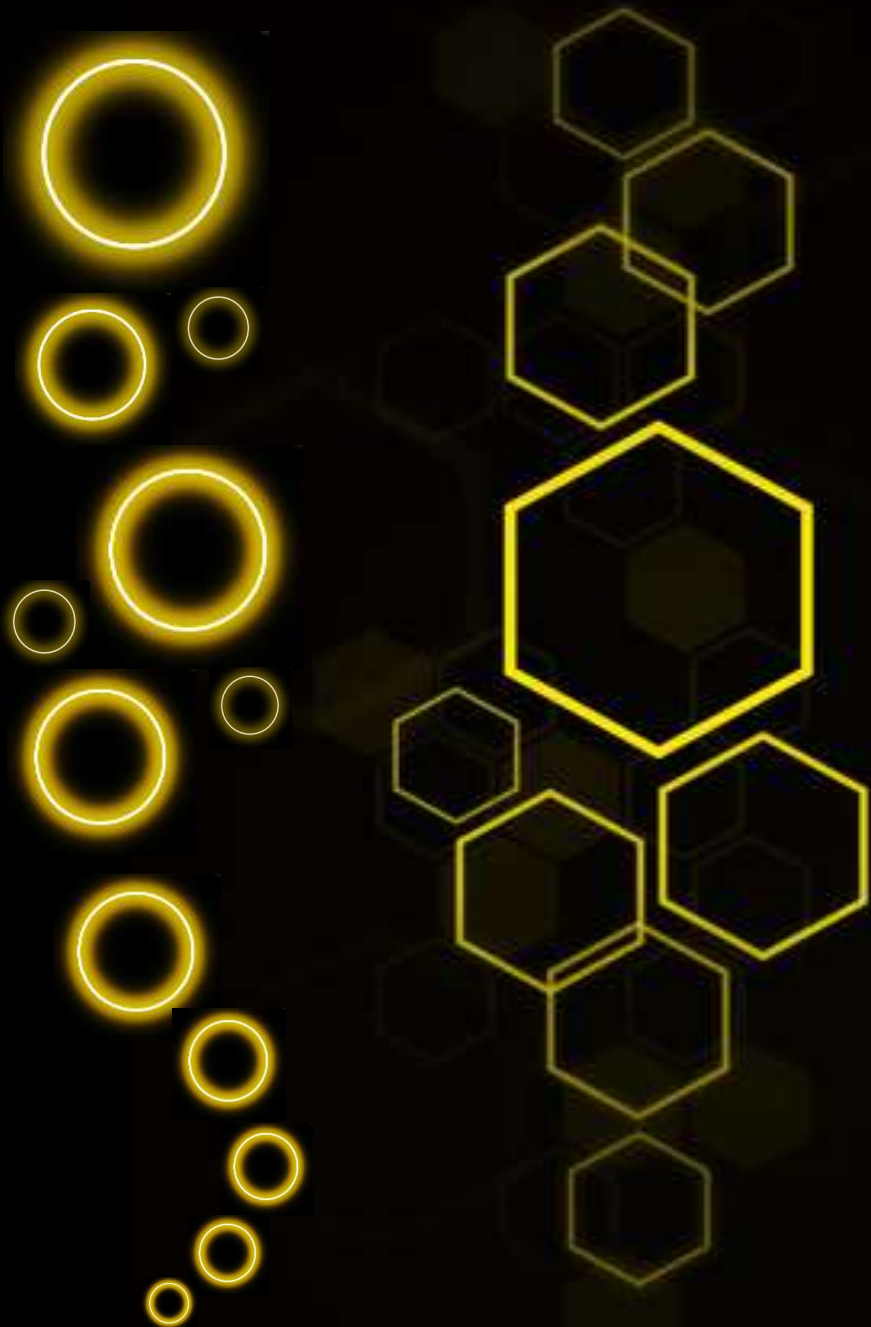


The lushness of green



Flow
Overlaps
Symmetry
Focus



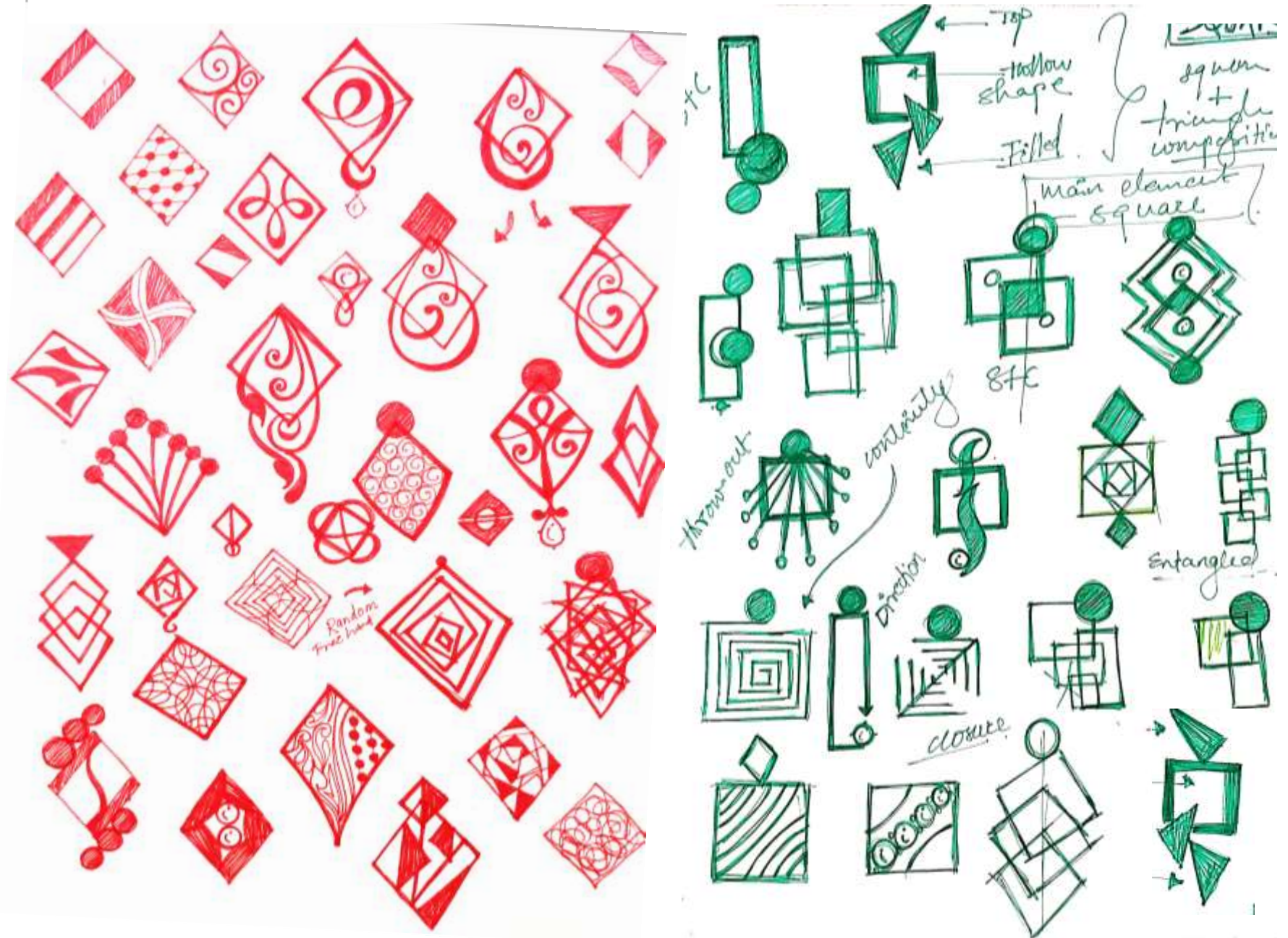
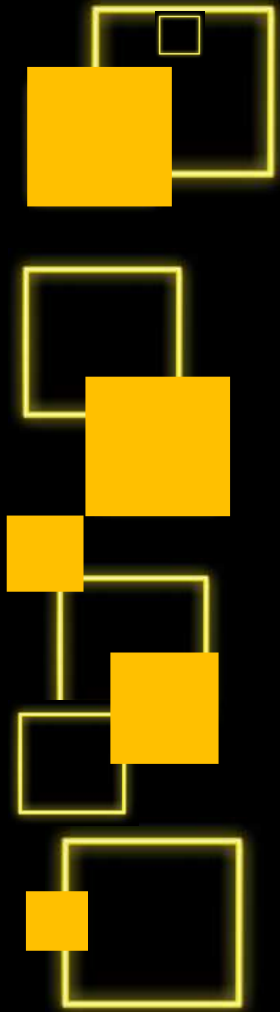


BASIC GEOMETRIC ELEMENTS

SQUARE

AS A DESIGN ELEMENT

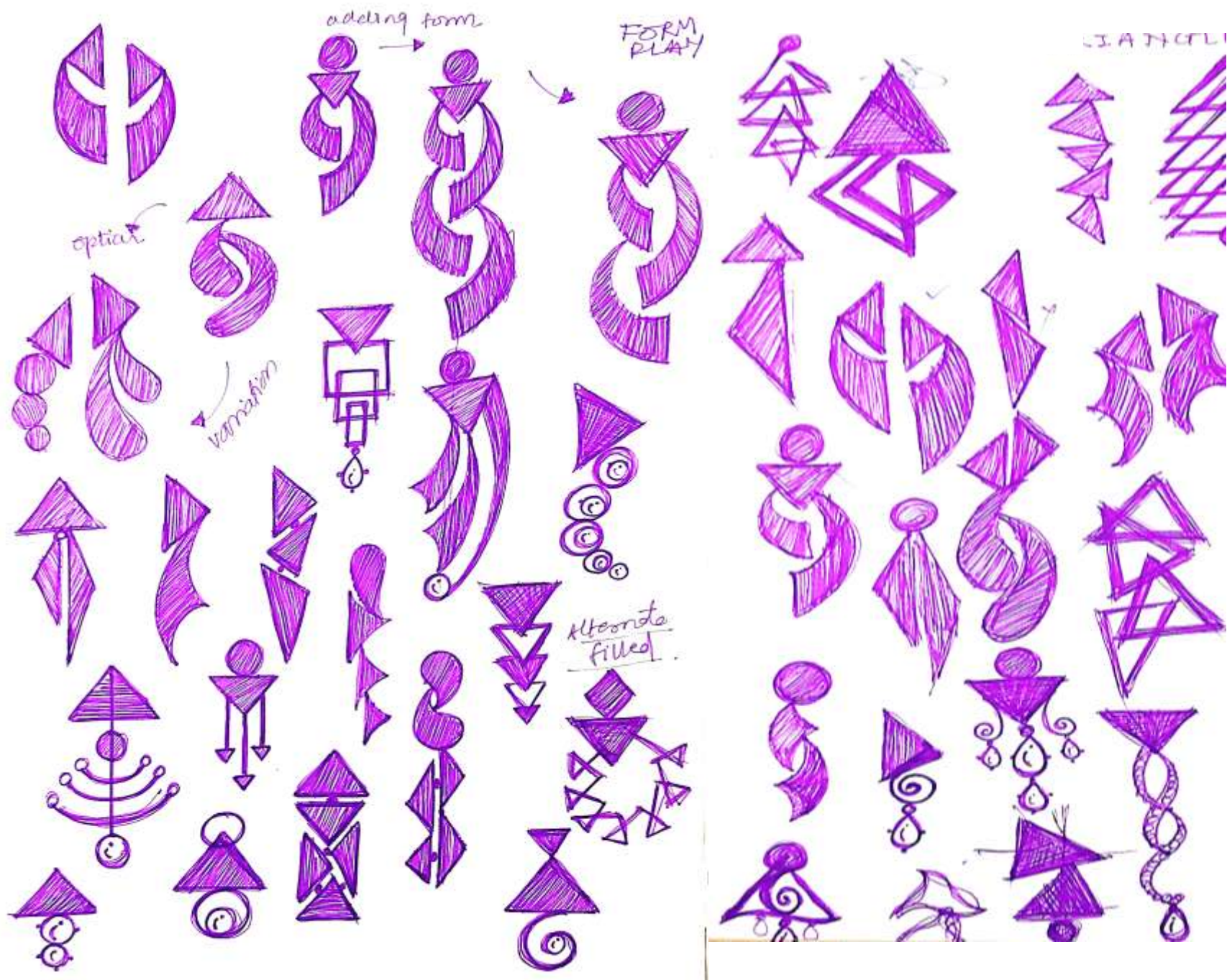
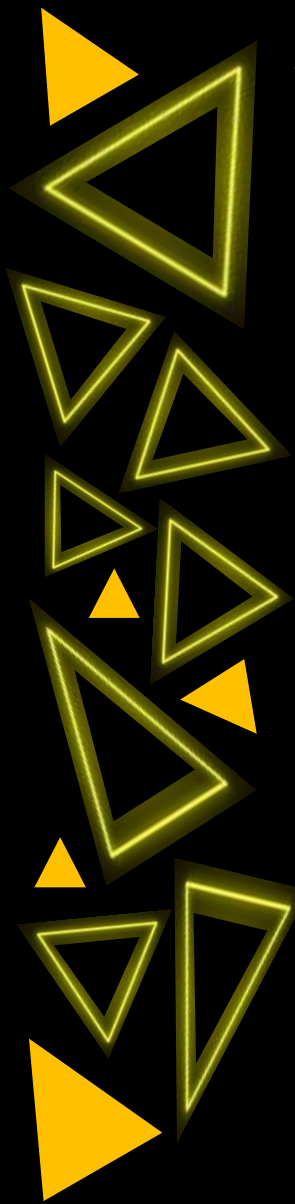
The square with its four corners represents unity, order and most importantly stability. It also represents solidity and overall balance. It is associated with the number 4 and relates to the four elements of the physical world earth, air, water, and fire.



TRIANGLE

AS A DESIGN ELEMENT

Triangles have two meanings depending on their positions, when pointing up it represents stability and while pointing down it represents unstability. They symbolize manifestation, enlightenment, revelation and higher perspective. With sharp and narrow corners triangles become dynamic.



BIOMIMICKING TULIP INTO JEWELLERY DESIGN

WHY ARE TULIPS SO
UNDERRATED ?

The most known meaning of tulips is perfect and deep love. As tulips are a classic flower that has been loved by many for centuries they have been attached with the meaning of love. They're ideal to give to someone who you have a deep and an unconditional love for, whether it's your partner, children, parents or siblings.

Did watermelon tourmaline
too got inspire from tulips ?



TULIP
INSPIRED
EARRINGS &
PENDANT
DESIGNS

Can a tulip
pendant be
gifted on
valentines
now ?

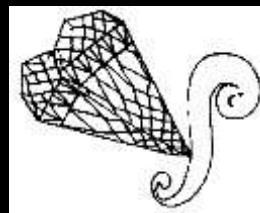
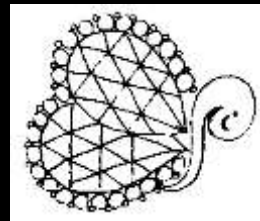
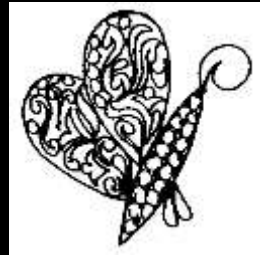
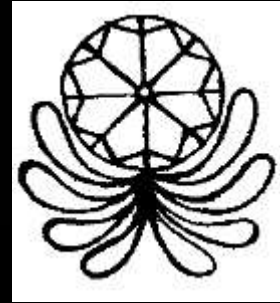
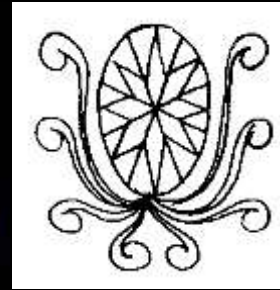


BIOMIMICKING THE FORMS INTO BROOCHES

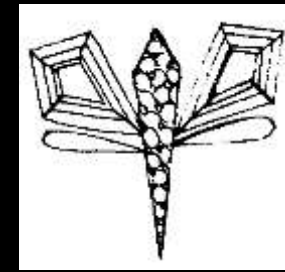
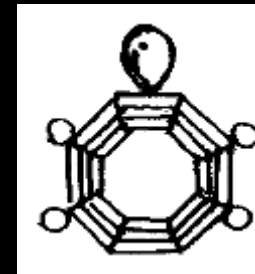
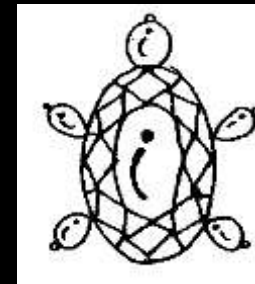
A brooch is a decorative jewellery piece designed to be attached to garments, often to fasten them together. It is usually made of metal often silver or gold or some other material. Brooches are frequently decorated with enamel or with gemstones and may be solely for ornament or serve a practical function as a clothes fastener.



OCTOPUS



BUTTERFLY



DRAGONFLY

TORTOISE



THANK YOU

