



# Landscape design

Submitted by :- Akanksha Patil.  
Guided by :- Dipti Lohogaonkar Ma'am.



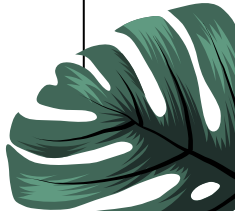
# Concept of landscape design



The concept for the terrace garden is recycled theme. Recycling is a series of activities that include: collection, separation and waste return process as raw material in the process of producing useful products, saving energy.

As the garden is used by the members of INSD, so the younger generation can learn about the concept of recycle and get admired and turned a waste thing into a useful product that can display at the recycle display wall of garden.

The garden has the positive point that it have the loop walking track. Also they can do group discussion , have some chill time. It has the amazing workstations so the INSD next designers can work. Also it has the drama stage provided with warm lighting so they can relief and had a joyful moment.



# Table of Contents

---

**01.**

Landscape  
site

**02.**

Landscape  
bubble diagram

**03.**

Landscape  
Plan

**04.**

Plants used in  
landscape design

**05.**

Terrace garden  
day view

**06.**

Terrace garden  
night view



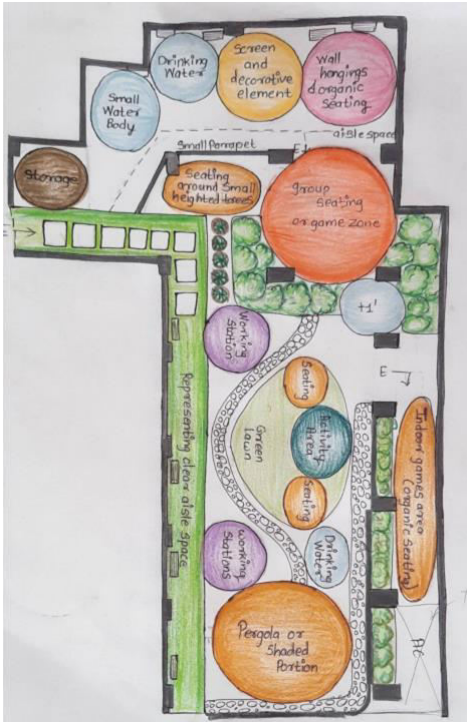
# Landscape site



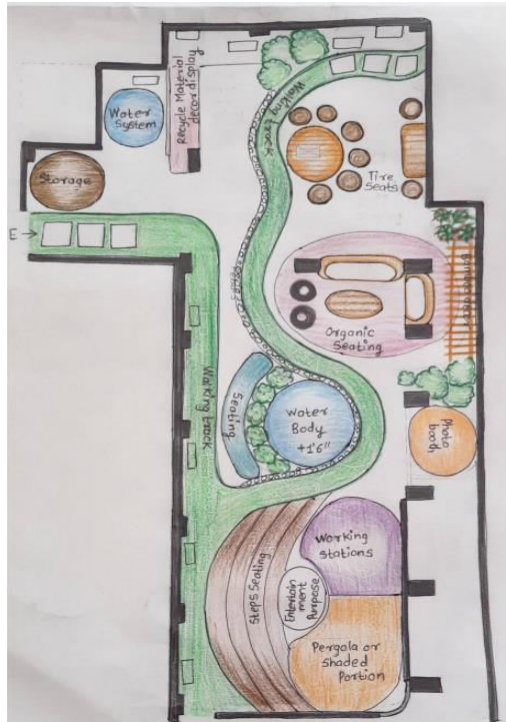


# Bubble diagram

## #Trial 1



## #Trial 2

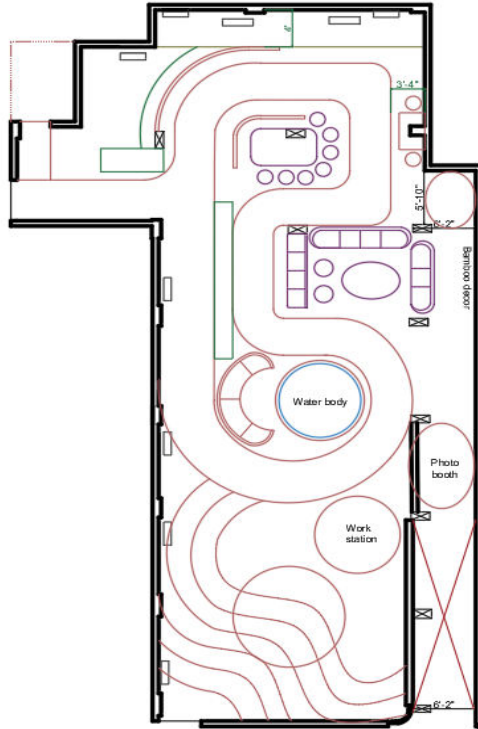


## #Trial 3



# Bubble diagram

# Trial 4



# Trial 5





# Plants used in terrace design



**Parlor Palm**



**Lady palm**



**Queen's crape  
myrtle tree**







**Vine creepers**



**Snake plant**



**Grass for walking track**



# Terrace design day view

## Entrance





# Recycle wall



# Organic seating





# Activity area





# Water body



# Workstation and photobooth

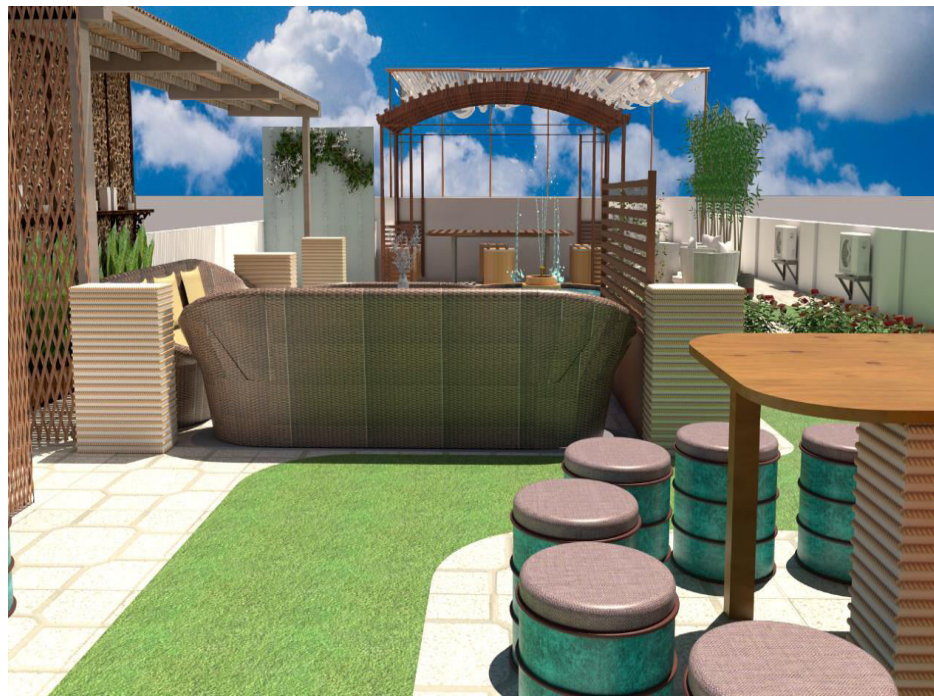




# Entertainment area



# Overall view





## Terrace garden night view





# Workstation and photobooth



# Recycle wall



# Overall view





The image features a white background with a light green rectangular box in the center. The box contains the text "Thank you!!!". The text is in a dark green, serif font. There are decorative green leaves in the corners: a large leaf in the top right, a cluster of leaves in the bottom left, and a branch of leaves in the bottom right. A thin black line runs horizontally across the top and bottom of the page, and a vertical line runs down the right side, framing the central box.

**Thank you!!!**